



气动夹爪 B40 – B40V Pneumatic grippers B40 – B40V

主要特点:

- 钢制壳体
- 夹紧位置不可反向
- 钢制夹臂 A 和 B
- 4 种固定板
- 气缸缸径 40 mm
- 2 个 G1/8" 气源接口
- 电感式接近开关 3 个 led (接口 M12x1)
- B40V: 带容差金属厚度板



Main characteristics:

- Steel body
- Irreversibility of clamping position
- Steel arms type A e B
- 4 type of fixing plates
- Pneumatic cylinder bore 40 mm
- 2 feeding ports G1/8"
- Inductive proximity switch 3 leds (connection M12x1)
- B40V: sheet metal thickness compensation



[PDF](#)



[3D Step](#)



[Index](#)

索引.

Index.

页码 Page	描述 Description	
1	主要特点 Main characteristics	
2	订货举例 Ordering example	
3	页码尺寸 Dimensional page	B40-AX...
4		B40-A1...
5		B40-A2...
6		B40-BX...
6		B40-B1... B40-B2...
7-9	固定板类型 Type of fixing plates	
10	图表/ 耗气量 Diagrams / Air consumption	
11	电感式接近开关示意图 / 气路图 Diagram for inductive proximity switch / Pneumatic plan	
12	备件/ Spare parts	
13	备注 / Notes	



订货举例.

Ordering example.

B40 - A1 - S4 - PL - A - 45 - A - A

类型 / Type:
B40 (固定厚度板)
 (fixed thickness)
 气缸缸径 / cylinder bore 40 mm
B40V (可调容差厚度板)
 (variable thickness)
 气缸缸径 / cylinder bore 40 mm



打开角度
Opening angle:

B40A	22,5°	45°	80°
B40B	45°	90°	160°
B40VA	22,5°	45°	80°
B40VB	45°	90°	160°

夹臂和压块类型:
Type of arms and blocks:

AX: 单夹臂无压块
 single arm without block

A1: 单夹臂单压块
 single arm with single block

A2: 单夹臂双压块
 single arm with double block

BX: 双夹臂无压块
 double arms without blocks

B1: 双夹臂单压块
 double arms with single blocks

B2: 双夹臂双压块
 double arms with double blocks



备注: 其它相关信息请参见尺寸页码。
NOTE: for other information see dimensional pages.

接近开关类型:
Type of proximity-switch:

A: P+F 标准接近开关
 standard proximity-switch P+F

B: P+F 电感式接近开关带白色 LED
 (保时捷 Porsche 规格)
 proximity-switch P+F with white LED
 (Porsche normative)

备注: 其它相关信息请参考第 11 页。
NOTE: for other information see page 11.

固定销类型:
Type of lock-pins:

X: 无固定销
 without pin

A: M8 销钉带滚花头
 pins M8 with hexagonal knurled head

B: M8 销钉带圆头
 pins M8 with rounded head



垫片厚度:
Thickness washer:

SX: 无垫片 (一般用于“B”型夹臂)
 without washer (always for type “B” arms)

S4: 标准垫片厚度 4 mm;
 standard washer of 4 mm of thickness;

备注: 请用 S1, S2, S3, S4, S5, S6 代表 1 到 6 mm 的所需垫片厚度。
NOTE: possibility to demand a thickness washer from 1 mm to 6 mm putting S1, S2, S3, S4, S5, S6.



电感式接近开关位置:
Inductive proximity-switch position:

PX: 无接近开关
 without proximity-switch

PL: P+F 接近开关在左侧
 proximity-switch P+F on left side

PR: P+F 接近开关在右侧
 proximity-switch P+F on right side



备注: 气源接口位置和接近开关在同侧。
NOTE: the feeding ports position is always the same of proximity-switch one.

固定板类型:
Type of fixing plates:

A: 标准固定板
 standard fixing plate

B30: Ø30 mm 带球头连接固定板
 fixing plate with ball joint Ø30 mm

B40: Ø40 mm 带球头连接固定板
 fixing plate with ball joint Ø40 mm

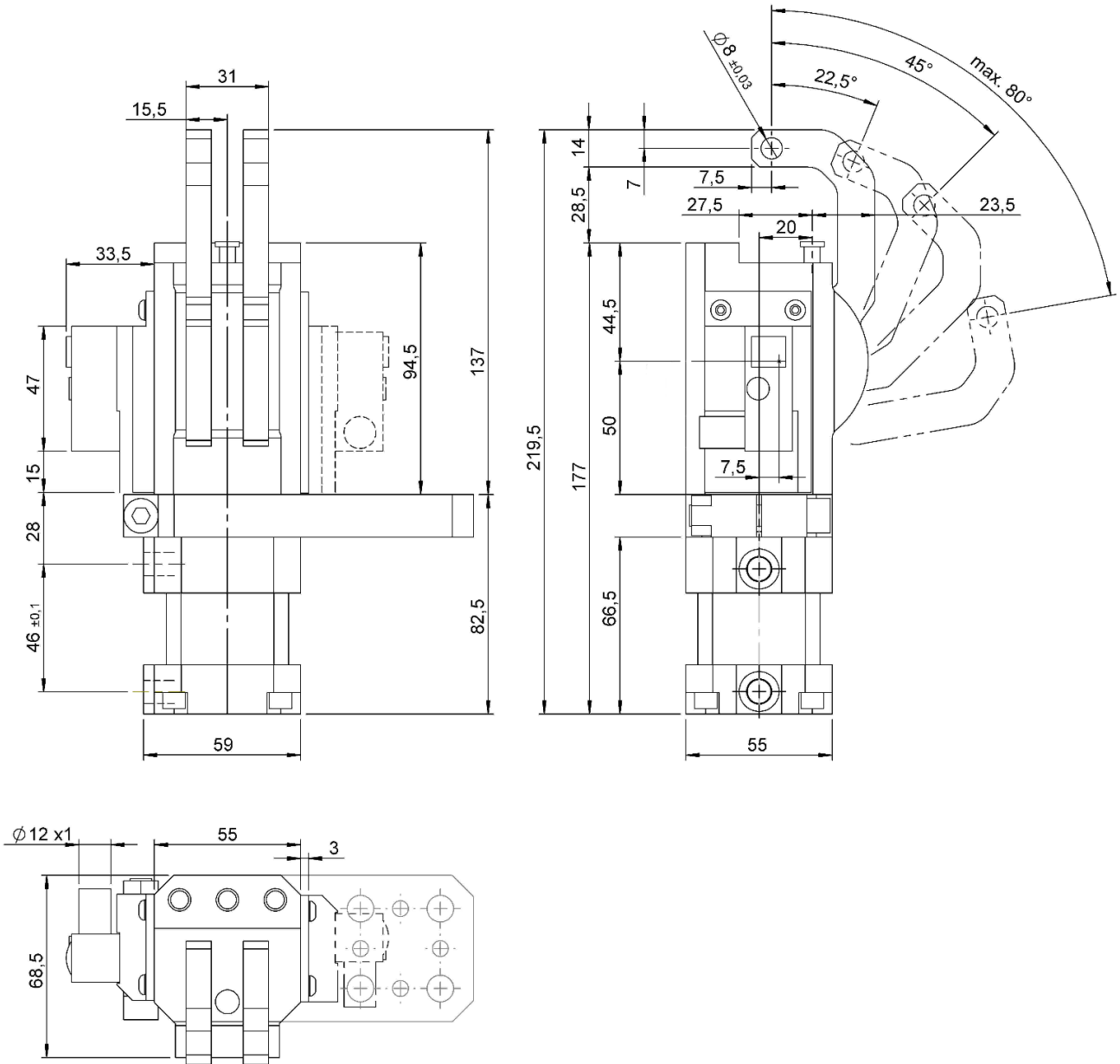
C: 底部固定板
 lower fixing plate





B40-AX...

气动夹爪, D. 40, 单夹臂, 无固定销, 标准固定板
Gripper D. 40, single arm, no pin, standard fixing plate

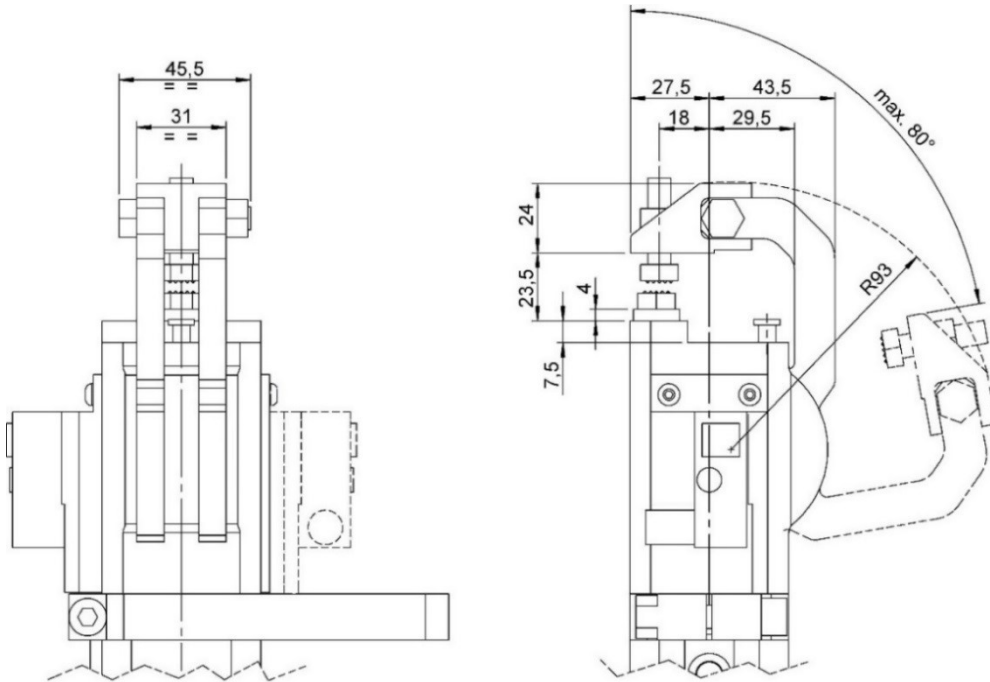


类型 Type	气缸缸径 Cylinder bore	容差范围 Metal sheet compensation	夹紧力 (5 bar) Clamping force (5 bar)	重量 Weight	工作气压 Working pressure	打开角度 Opening angle
	[mm]	[mm]	[N]	[Kg]	[bar]	[°]
B40-AX...	40	0	1400	~ 2,5	4 - 8	22,5° - 45° - 80°
B40V-AX...		1,5	1050			



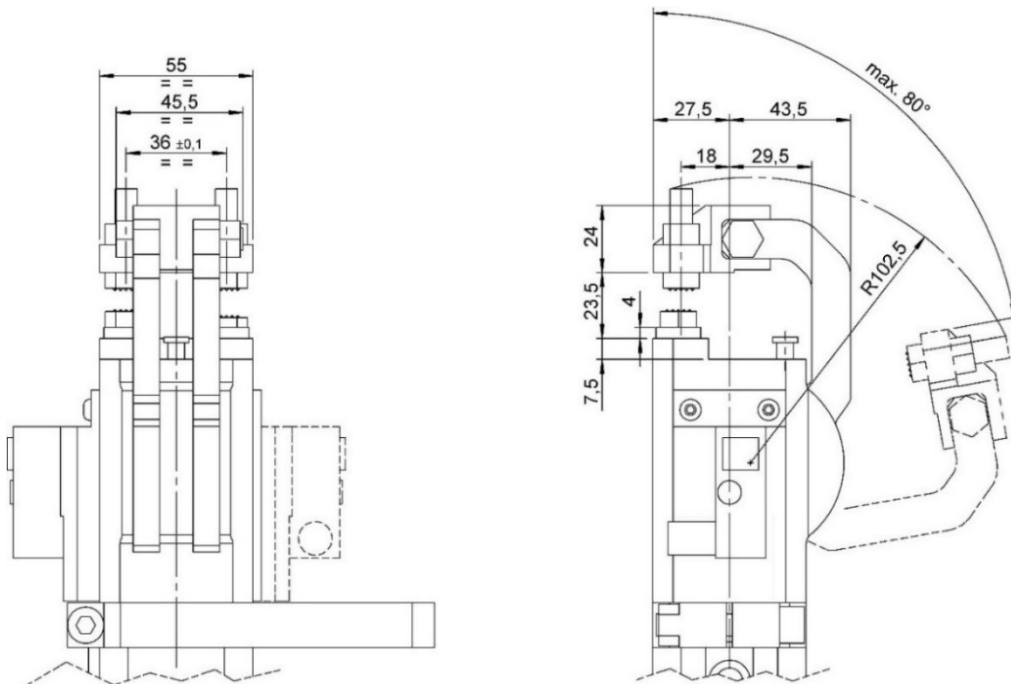
B40-A1...

夹紧气爪, D. 40, 单夹臂, 1 个固定销, 标准固定板
Gripper D. 40, single arm, 1 pin, standard fixing plate



B40-A2...

气动夹爪 D. 40, 单夹臂, 2 个固定销, 标准固定板
Gripper D. 40, single arm, 2 pins, standard fixing plate

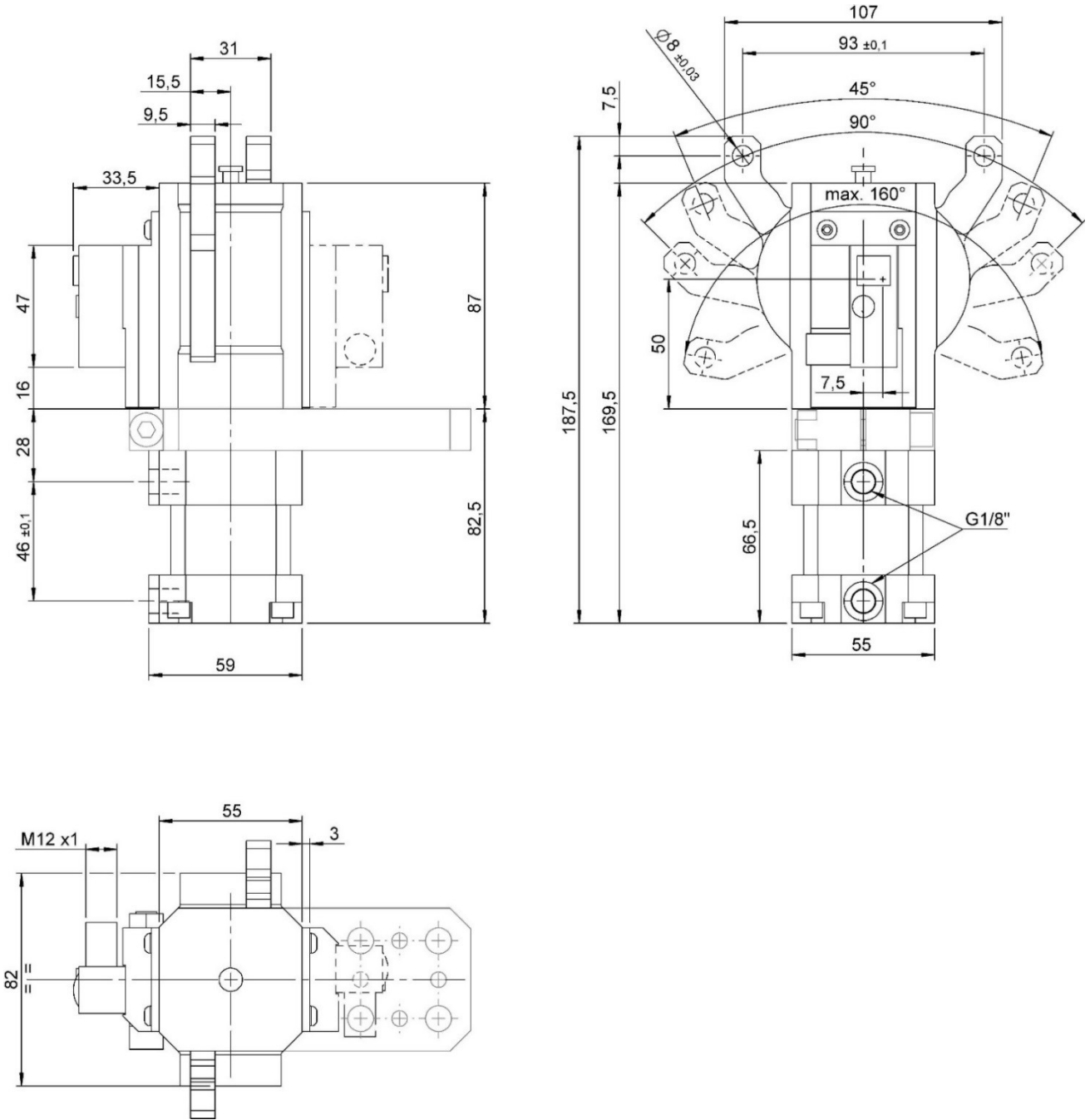


类型 Type	气缸缸径 Cylinder bore	容差范围 Metal sheet compensation	夹紧力 (5 bar) Clamping force (5 bar)	重量 Weight	工作气压 Working pressure	打开角度 Opening angle
	[mm]	[mm]	[N]	[Kg]	[bar]	[°]
B40-A...	40	0	1400	~ 2,5	4 - 8	22,5° - 45° - 80°
B40V-A...		1,5	1050			

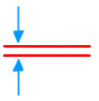


B40-BX...

气动夹爪, D. 40, 双夹臂, 无固定销, 标准固定板
Gripper D. 40, double arm, no pin, standard fixing plate

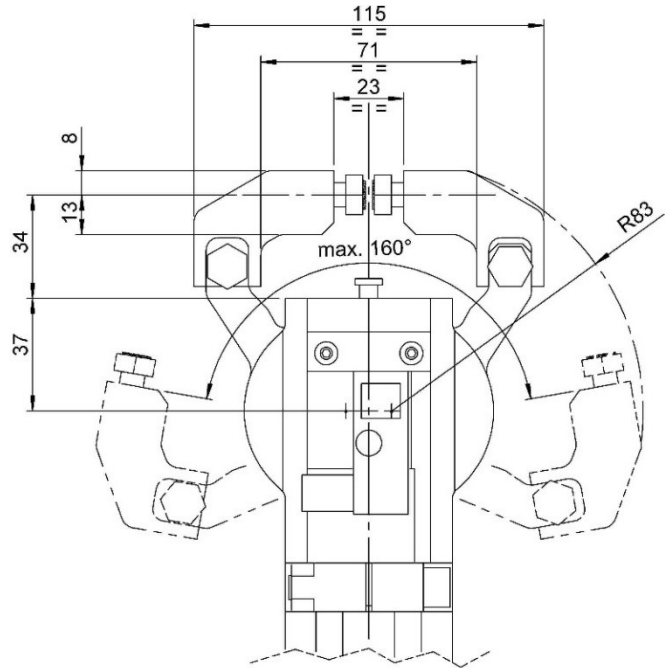
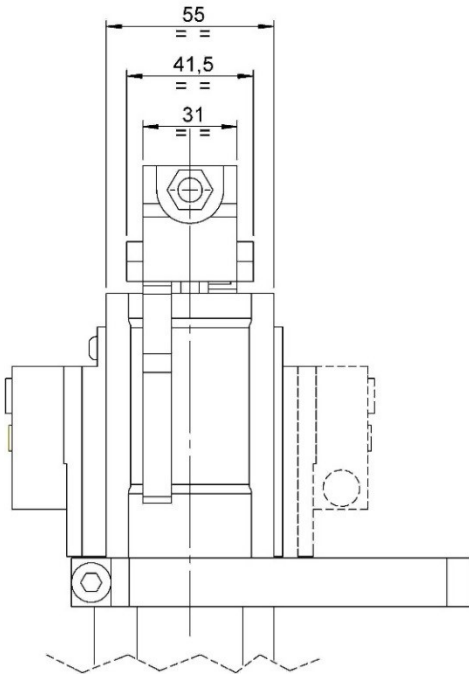


类型 Type	气缸缸径 Cylinder bore	容差范围 Metal sheet compensation	夹紧力 (5 bar) Clamping force (5 bar)	重量 Weight	工作气压 Working pressure	打开角度 Opening angle
	[mm]	[mm]	[N]	[Kg]	[bar]	[°]
B40-BX...	40	0	600	~ 2,5	4 - 8	45° - 90° - 160°
B40V-BX...		3	460			



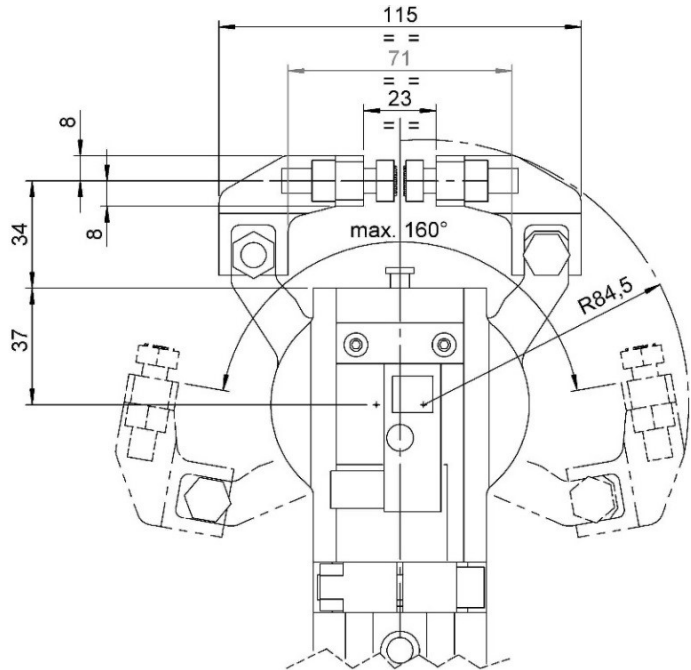
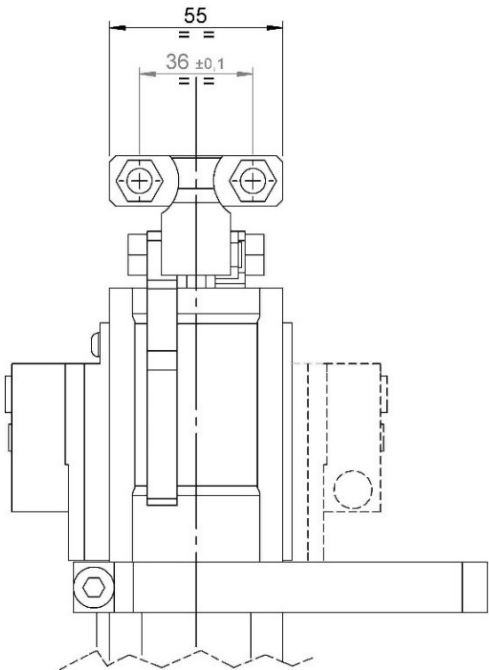
B40-B1...

气动夹爪, D. 40, 双夹臂, 1 个固定销, 标准固定板
Gripper D. 40, double arm, 1 pin, standard fixing plate



B40-B2...

气动夹爪, D. 40, 双夹臂, 2 个固定销, 标准固定板
Gripper D. 40, double arm, 2 pins, standard fixing plate



类型 Type	气缸缸径 Cylinder bore	容差范围 Metal sheet compensation	夹紧力 (5 bar) Clamping force (5 bar)	重量 Weight	工作气压 Working pressure	打开角度 Opening angle
	[mm]	[mm]	[N]	[Kg]	[bar]	[°]
B40-B...	40	0	600	~ 2,5	4 - 8	45° - 90° - 160°
B40V-B...		3	460			

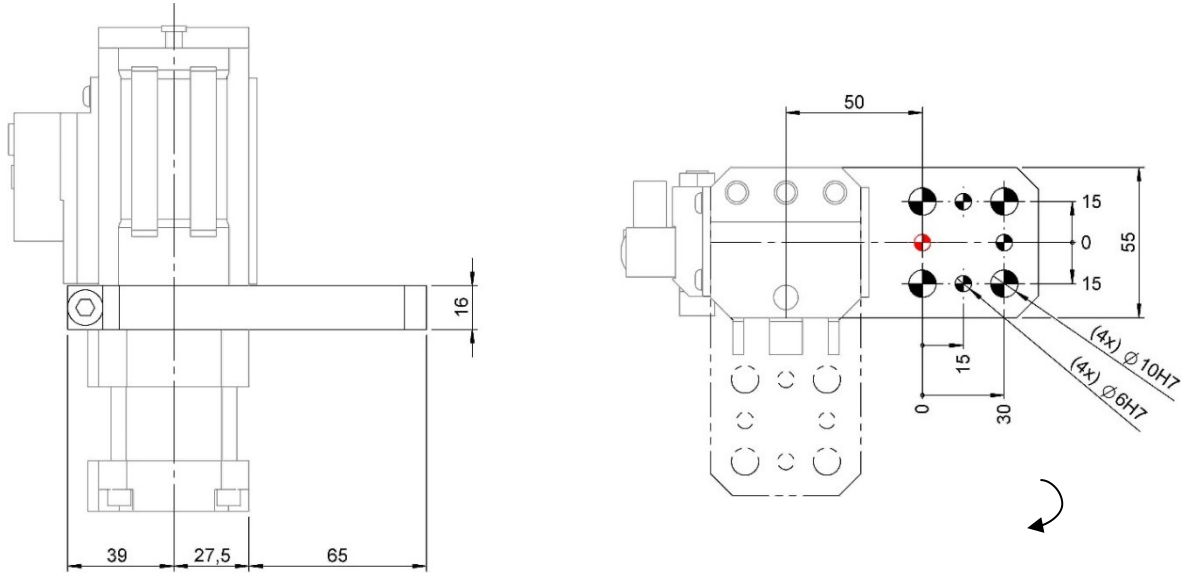


固定板类型.

Type of fixing plates.

B40.....-A

A 型固定板 (标准)
Plate type A (standard)



固定板可以 360°旋转

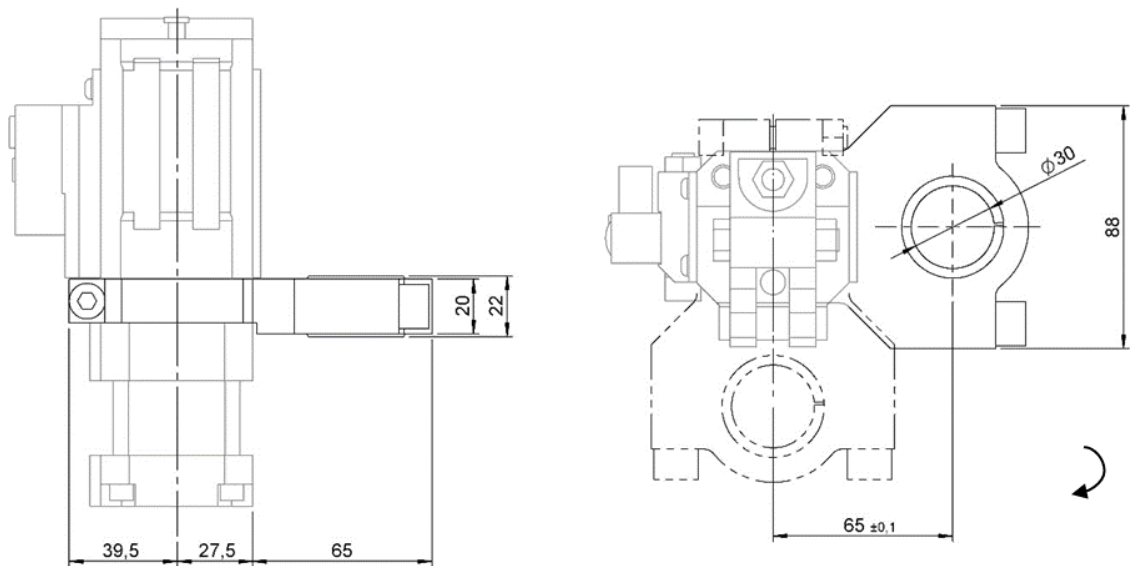
Possibility to rotate the plate of 360

公差: 定位销孔 ± 0.02 , 螺纹孔: ± 0.1

Tolerances: dowel holes ± 0.02 , screw holes ± 0.1

B40.....-B30

B30 型固定板
Plate type B30



固定板可以 360°旋转

Possibility to rotate the plate of 360

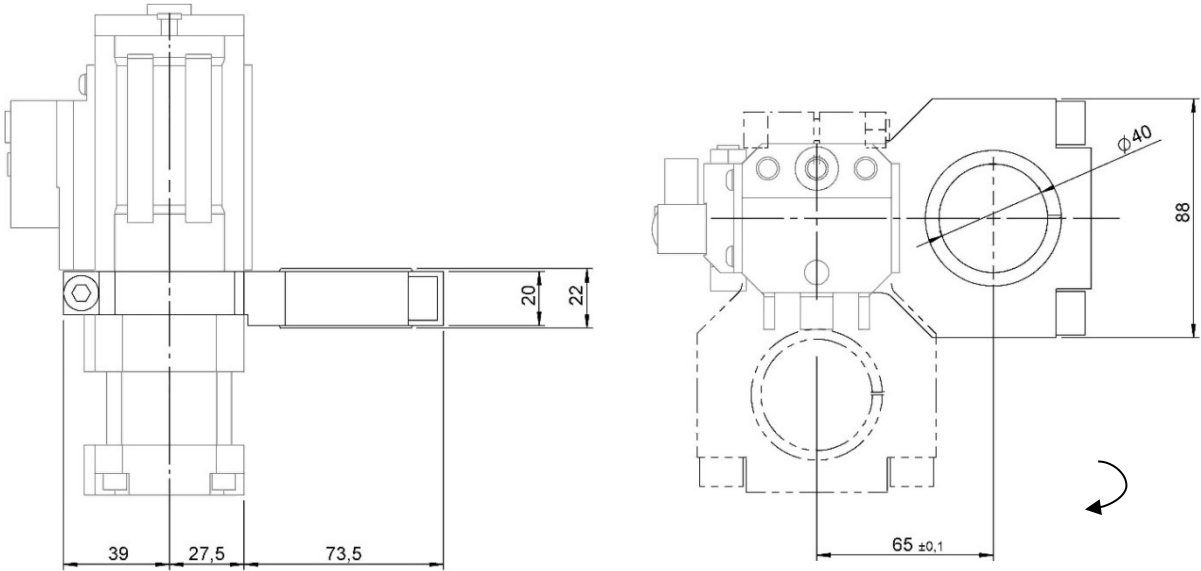


固定板类型.

Type of fixing plates.

B40.....-B40

B40 型固定板
Plate type B40

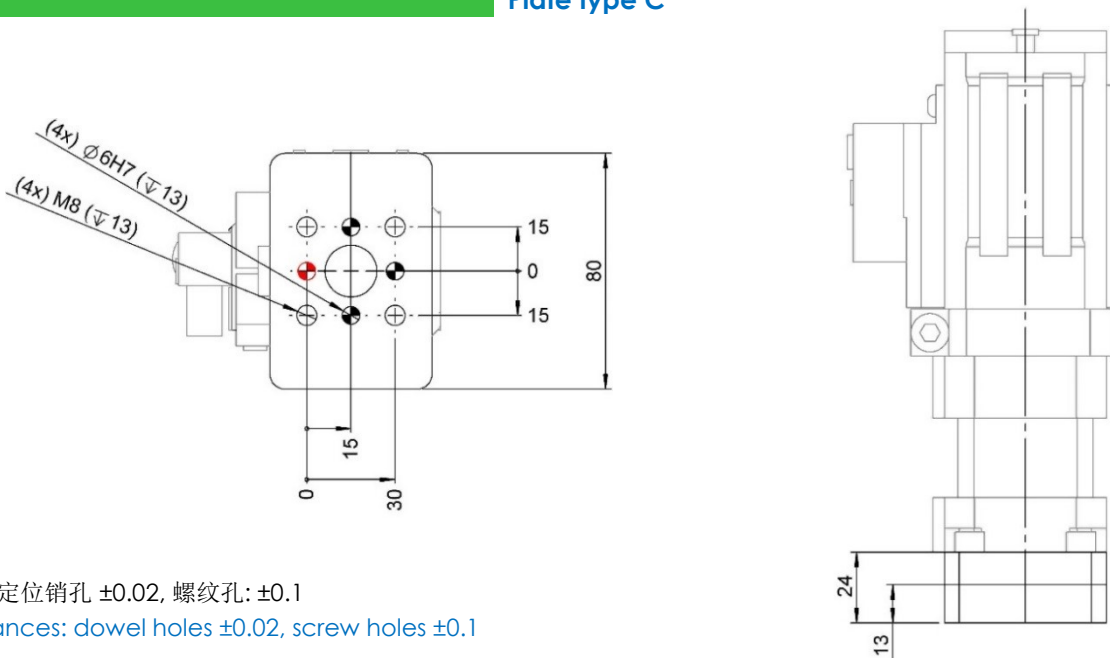


固定板可以 360° 旋转

Possibility to rotate the plate of 360°

B40.....-C

C*型固定板
Plate type C*



公差: 定位销孔 ± 0.02 , 螺纹孔: ± 0.1

Tolerances: dowel holes ± 0.02 , screw holes ± 0.1

*连接 C 型固定板需要在缸体和夹爪之间安装一个过渡隔板。订货代号: **06538/C**

* To mount the fixing type C, it's necessary to mount a plate/spacer between the cylinder and the gripper.

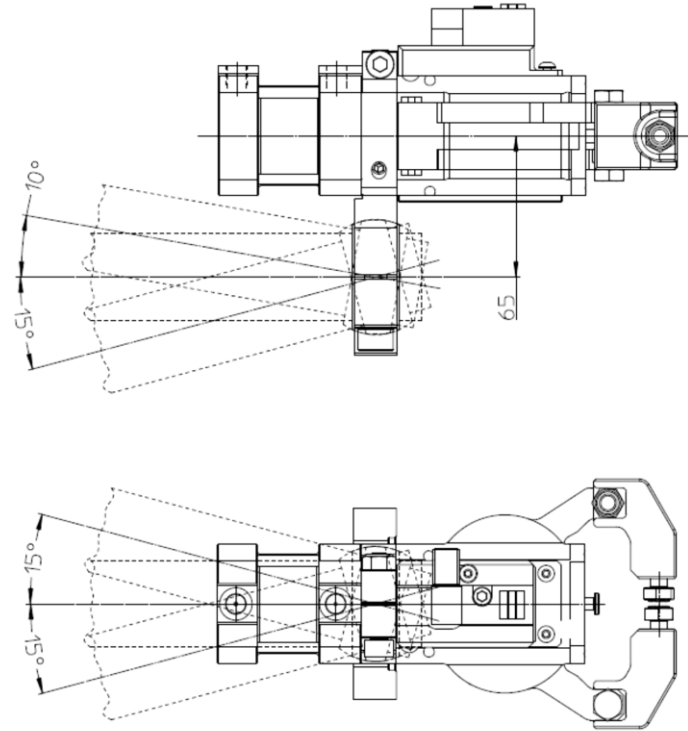
Order code **06538/C**





以下是上述带球头连接固定板的最大倾角 (B30, B40)。

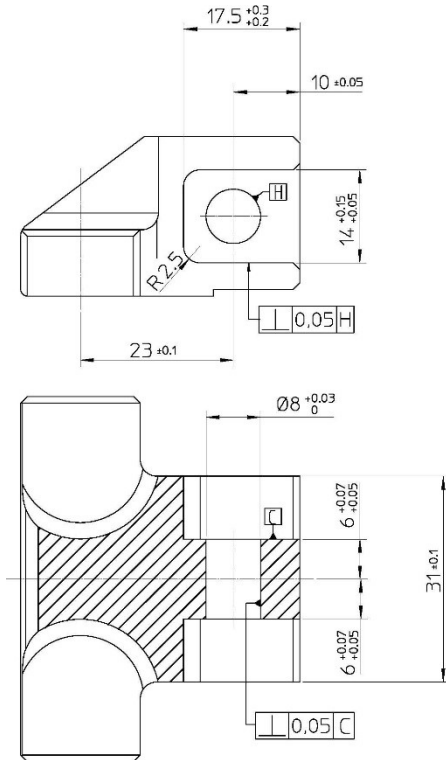
Describe below the maximum inclinations that can obtain with the use of mounts with ball joint described previously (B30, B40).



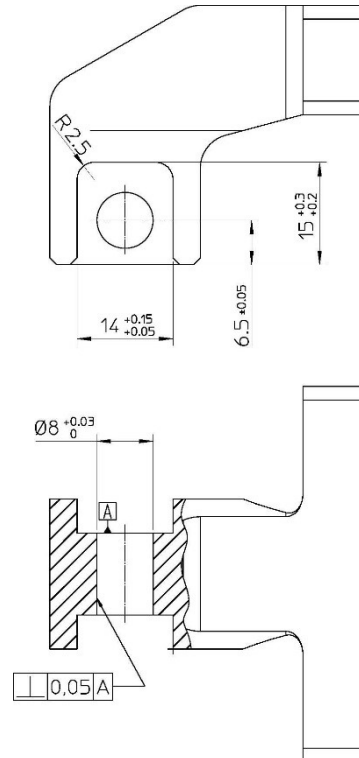
根据需求可以提供特殊压块，或者根据以下公差和尺寸定制压块。

On request they are available special blocks or they can be built respecting the dimensions with it's tolerances.

A 型
Type A



B 型
Type B



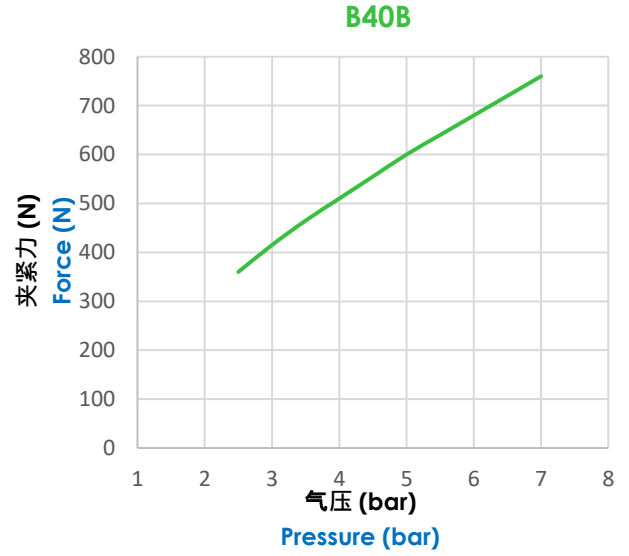
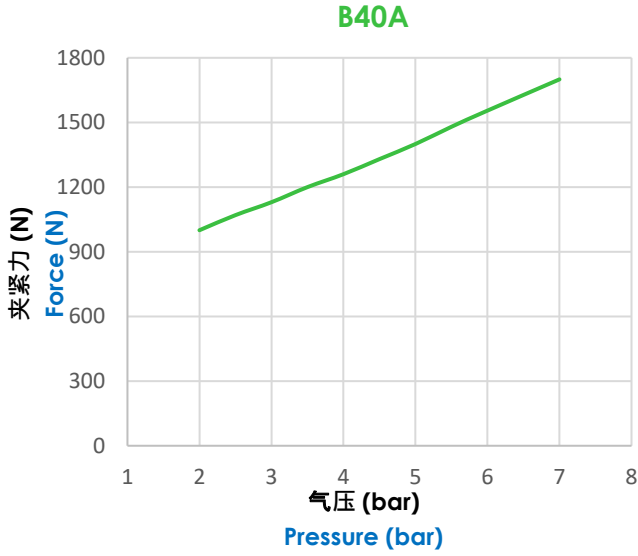


图表.

Diagrams.

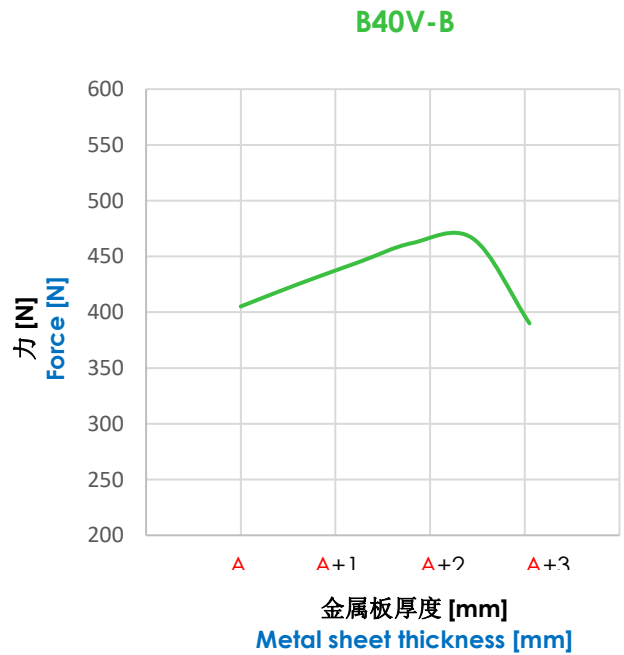
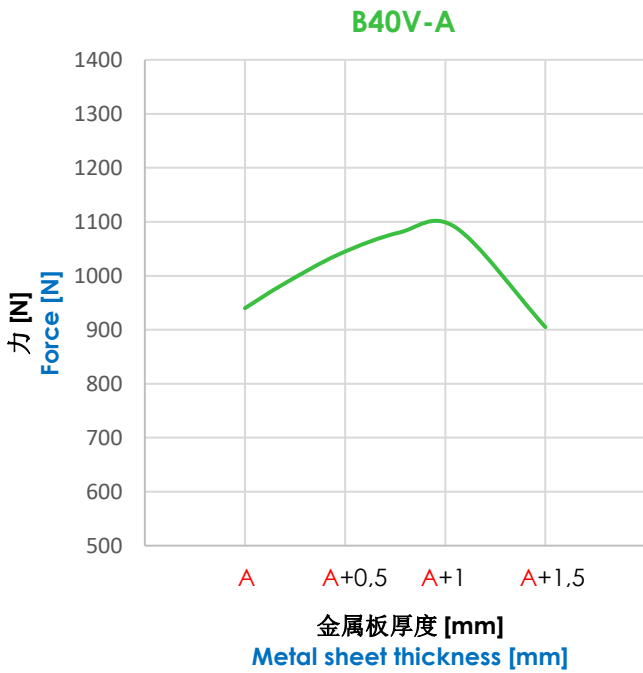
B40 夹紧力曲线图

Force diagram B40



B40V 夹紧力曲线图.

Force diagram B40V.



A: 正常金属板厚度
nominal metal sheet thickness



电感式接近开关图表.

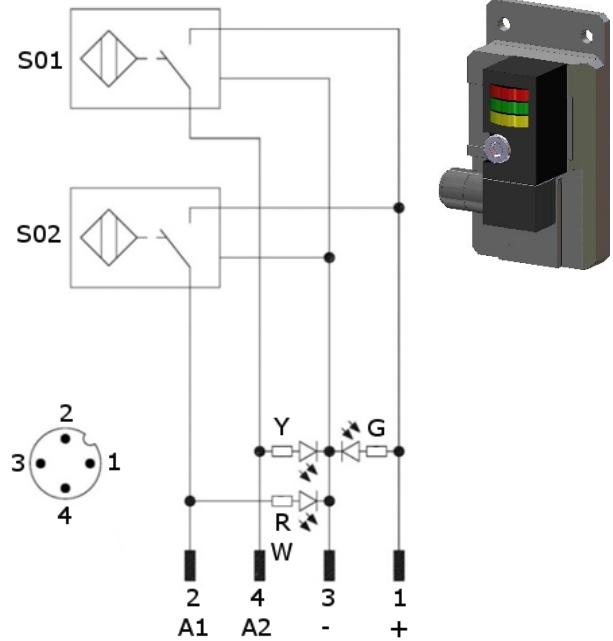
Diagram for Inductive proximity switch.

技术参数 (P+F):

- 输出类型: PNP;
- 输入电压: 10-30 VDC;
- 最大换向电流: 200 mA;
- 电源供应: < 25 mA;
- 电压差: < 2 V
- 工作温度: -25° / 70° C.

Technical data (P+F):

- Output type: PNP;
- Feeding voltage: 10-30 VDC;
- Max. commutating current: 200 mA;
- Power supply: < 25 mA;
- Voltage drop: < 2 V;
- Temperature range: -25° / 70° C.



- cod. 06403/R/C** 标准接近开关带红色 LED
- cod. 06403/W/C** 接近开关带白色 LED (保时捷 Porsche 规格)
- cod. 06403/R/C** for standard proximity-switch with red LED;
- cod. 06403/W/C** for proximity-switch with white LED (Porsche normative).

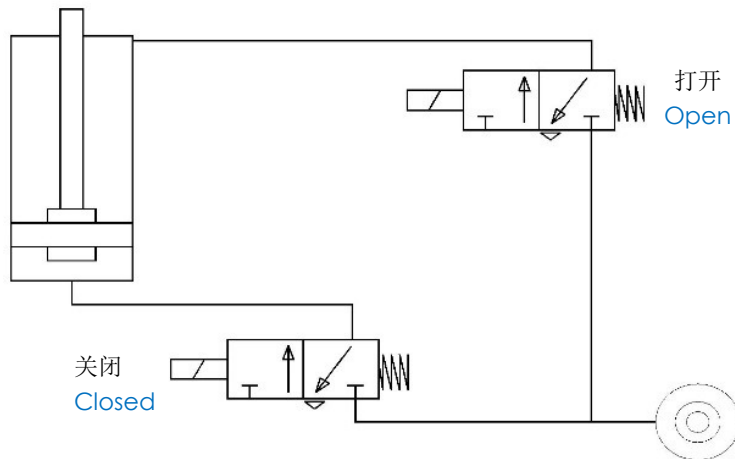
S01 = 打开角度
S01 = opening signal
S02 = 关闭角度
S02 = closing signal

Y = 黄色 LED / yellow LED
G = 绿色 LED / green LED
R = 红色 LED / red LED

1 = 棕色线 / brown wire
2 = 黑色线 / black wire
3 = 蓝色线 / blue wire
4 = 白色线 / white wire

气路图.

Pneumatic plan.



工作气压 Working pressure	打开角度 Opening angle	打开角度 Opening angle	耗气量 Air consumption (5 bar)
	B40A / B40V-A	B40B / B40V-B	
[bar]	[°]	[°]	[l]
4 – 8	22,5	45	0,20
	45	90	0,25
	80	160	0,30



备件.

Spare parts.

配套元件 # Kit	图片 Picture	描述 Description	代号 Article	
压块 Blocks		A1型压块 Block type A1	06534/C	
		A2型压块 Block type A2	06536/C	
		B1型压块 Block type B1	06535/C	
		B2型压块 Block type B2	06362/C	
锁紧螺钉 Lock-pins		M8x1.25x30 六角滚花头螺钉+螺母 Pin with hexagonal knurled head M8x1.25x30 + nut	3/342/C	
		M8x1.25x10 M8x1.25x30 六角滚花头螺钉 Pin with hexagonal knurled head M8x1.25x10	3/341	
		B40A锁紧螺钉套件 (1个 M8x1.25x30六角滚花头螺钉, 1个M8x1.25x10六角滚花头螺钉, 1个M8螺母) B40A pins kit (1 pin M8x1.25x30, 1 pin M8x1.25x10, 1 nut M8)	A-LPA	
		B40B锁紧螺钉套件 (2个 M8x1.25x30六角滚花头螺钉, 2个M8螺母) B40B pins kit (2 pin M8x1.25x30, 2 nuts M8)	B-LPA	
固定板 Fixing plates		A型标准固定板 Standard fixing plate type A	06351/C	
		B30型Ø30 mm球头固定板 Fixing plate with ball joint Ø30 mm type B30	06540/30/C	
		B40型Ø40 mm球头固定板 Fixing plate with ball joint Ø40 mm type B40	06549/40/C	
		C型底部固定板 Lower fixing plate type C	06552/C	
		C型隔离板 Spacer plate for type c	06538/C	
接近开关 Proximity switch		P+F电感式标准接近开关 (带红色LED) Standard proximity switch P+F (with red LED)	06403/R/C	
		P+F电感式标准接近开关 (带白色LED) 属保时捷Porsche 规格 Standard proximity switch P+F (with white LED) Porsche normative	06403/W/C	
密封圈套装 Seals kit		缸径 40 mm气缸密封组件 Seal components for pneumatic cylinder bore 40 mm	SCR-CILB40	
调整垫片 Spacer		调整打开角度垫片 Spacer for opening angle adjustment	B40-A... 22.5°	06533/45/C
			B40-B... 45°	
		调整打开角度垫片 Spacer for opening angle adjustment	B40-A... 45°	06533/90/C
			B40-B... 90°	

